



Batik

isla ■

FASCINO ITALIANO

isla ■

FASCINO ITALIANO





Batik





*Riso 25x50 . 10"x20" - Ribes 25x50 . 10"x20" - Modulo ribes 25x50 . 10"x20" -
Fascia pouf ribes 25x50 . 10"x20" - Mosaico zig-zag moyen 25x25 . 10"x10" -
Coprifilo riso 1,2x25 . 1/2"x10" - Coprifilo ribes 1,2x25 . 1/2"x10"*



Fascia pouf ribes 25x50 . 10"x20"



1. The first part of the document discusses the importance of maintaining accurate records of all transactions. It emphasizes that proper record-keeping is essential for the integrity of the financial system and for the ability to detect and prevent fraud. The document outlines the various types of records that should be maintained, including receipts, invoices, and bank statements, and provides detailed instructions on how to properly document and store these records.

2. The second part of the document focuses on the role of internal controls in ensuring the accuracy and reliability of financial information. It describes the various types of internal controls, such as segregation of duties, authorization requirements, and independent verification, and explains how these controls can be effectively implemented and monitored. The document also discusses the importance of regular internal audits and the role of the internal audit function in identifying and addressing control deficiencies.

3. The third part of the document addresses the issue of financial reporting and the importance of providing accurate and timely information to stakeholders. It discusses the various types of financial reports, such as the balance sheet, income statement, and cash flow statement, and provides detailed instructions on how to prepare and present these reports. The document also discusses the importance of disclosing all relevant information and the role of the auditor in verifying the accuracy of the financial statements.

4. The fourth part of the document discusses the importance of maintaining the confidentiality and security of financial information. It outlines the various types of risks that can arise from the unauthorized disclosure of financial information, such as reputational damage and financial loss, and provides detailed instructions on how to implement effective security measures to protect this information. The document also discusses the importance of regular security audits and the role of the information security function in identifying and addressing security vulnerabilities.

5. The fifth part of the document discusses the importance of maintaining the integrity and accuracy of the financial system. It outlines the various types of risks that can arise from the manipulation of financial information, such as fraud and misstatement, and provides detailed instructions on how to implement effective measures to prevent and detect such risks. The document also discusses the importance of regular monitoring and the role of the financial system in ensuring the integrity and accuracy of the financial system.

6. The sixth part of the document discusses the importance of maintaining the accuracy and reliability of financial information. It describes the various types of internal controls, such as segregation of duties, authorization requirements, and independent verification, and explains how these controls can be effectively implemented and monitored. The document also discusses the importance of regular internal audits and the role of the internal audit function in identifying and addressing control deficiencies.

7. The seventh part of the document addresses the issue of financial reporting and the importance of providing accurate and timely information to stakeholders. It discusses the various types of financial reports, such as the balance sheet, income statement, and cash flow statement, and provides detailed instructions on how to prepare and present these reports. The document also discusses the importance of disclosing all relevant information and the role of the auditor in verifying the accuracy of the financial statements.

8. The eighth part of the document discusses the importance of maintaining the confidentiality and security of financial information. It outlines the various types of risks that can arise from the unauthorized disclosure of financial information, such as reputational damage and financial loss, and provides detailed instructions on how to implement effective security measures to protect this information. The document also discusses the importance of regular security audits and the role of the information security function in identifying and addressing security vulnerabilities.

9. The ninth part of the document discusses the importance of maintaining the integrity and accuracy of the financial system. It outlines the various types of risks that can arise from the manipulation of financial information, such as fraud and misstatement, and provides detailed instructions on how to implement effective measures to prevent and detect such risks. The document also discusses the importance of regular monitoring and the role of the financial system in ensuring the integrity and accuracy of the financial system.

10. The tenth part of the document discusses the importance of maintaining the accuracy and reliability of financial information. It describes the various types of internal controls, such as segregation of duties, authorization requirements, and independent verification, and explains how these controls can be effectively implemented and monitored. The document also discusses the importance of regular internal audits and the role of the internal audit function in identifying and addressing control deficiencies.





Riso 25x50 . 10"x20" - Modulo ribes 25x50 . 10"x20" - Coprifilo riso 1,2x25 . 1/2"x10"





Mosaico zig-zag moyen 25x25 . 10"x10"



*Riso 25x50 . 10"x20" - Porpora 25x50 . 10"x20" - Fascia pouf porpora 25x50 . 10"x20" -
Mosaico bloom porpora 25x25 . 10"x10" - Coprifilo porpora 1,2x25 . 1/2"x10"*







Riso 25x50 . 10"x20" - Fascia pouf porpora 25x50 . 10"x20"







Porpora 25x30 . 10"x20" - Mosaico bloom porpora 25x25 . 10"x10" - Coprifilo porpora 1,2x25 . 1/2"x10"





*Riso 25x50 . 10"x20" - Porpora 25x50 . 10"x20" - Mosaico bloom porpora 25x25 . 10"x10" -
Coprifilo porpora 1,2x25 . 1/2"x10"*

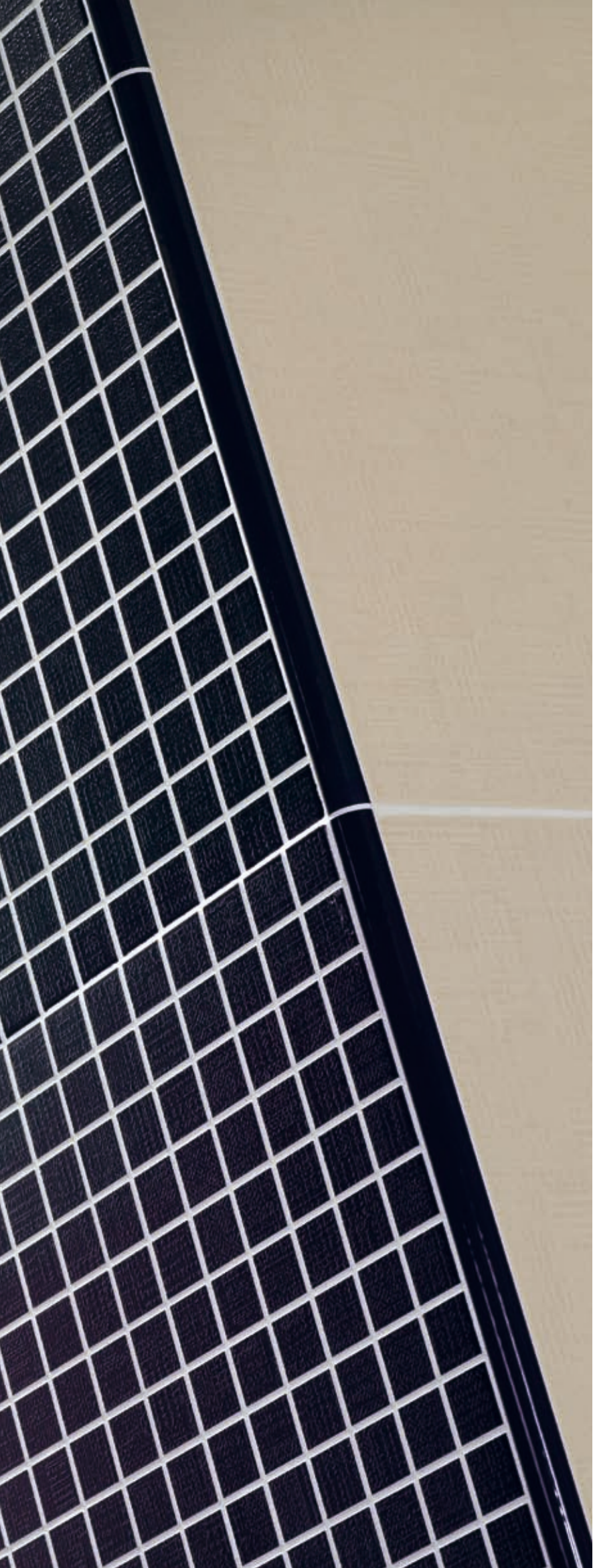






*Indaco 25x50 . 10"x20" - Riso 25x50 . 10"x20" - Modulo indaco 25x50 . 10"x20" - Composizione 3 pezzi silk indaco 25x50 . 10"x20"
- Mosaico tango froid 25x25 . 10"x10" - Coprifilo indaco 1,2x25 . 1/2"x10" - Coprifilo riso 1,2x25 . 1/2"x10" - Listello pois metal 0,6x50 . 3/4"x20"*





Riso 25x50 . 10"x20" - Modulo indaco 25x50 . 10"x20" - Composizione 3 pezzi silk indaco 25x50 . 10"x20" - Coprifilo indaco 1,2x25 . 1/2"x10" - Listello pois metal 0,6x50 . 3/4"x20"







Modulo indaco 25x50 . 10"x20" - Mosaico tango froid 25x25 . 10"x10" - Coprifilo indaco 1,2x25 . 1/2"x10"





*Cacao 25x50 . 10"x20" - Zafferano 33,3x33,3 . 12"x12" - Modulo Zafferano 25x50 . 10"x20" -
Mosaico spinato cacao 25x25 . 10"x10" - Fascia pouf zafferano 25x50 . 10"x20" - Listello kebaya cacao 4x50 . 1^{3/4}"x20" - Coprifilo cacao 1,2x25 . 1/2"x10"*





Modulo Zafferano 25x50 . 10"x20" - Mosaico spinato cacao 25x25 . 10"x10"





Cacao 25x50 . 10"x20" - *Modulo Zafferano 25x50 . 10"x20"* - *Fascia pouf zafferano 25x50 . 10"x20"* - *Coprifilo cacao 1,2x25 . 1/2"x10"*





Cacao 25x50 . 10"x20" - Riso 25x50 . 10"x20" - Modulo zafferano 25x50 . 10"x20" - Listello kebaya cacao 4x50 . 1^{3/4}"x20"

25x50 . 10"x20"



BT20 Riso



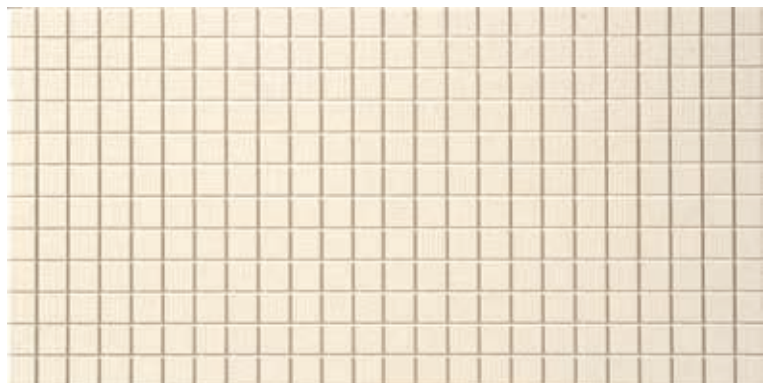
25x50 . 10"x20"



BT210 Porpora



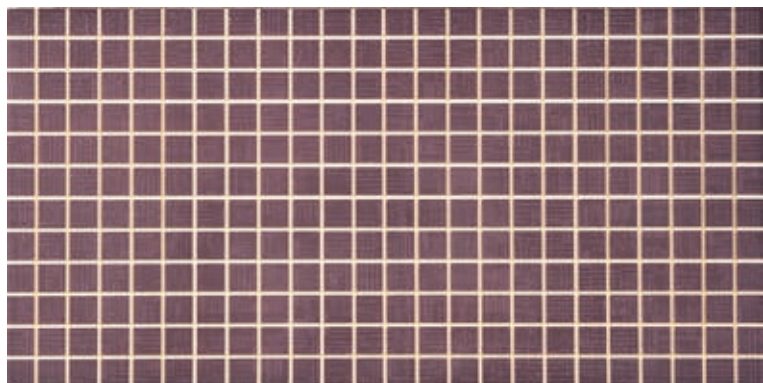
25x50 . 10"x20"



Modulo BT20 riso



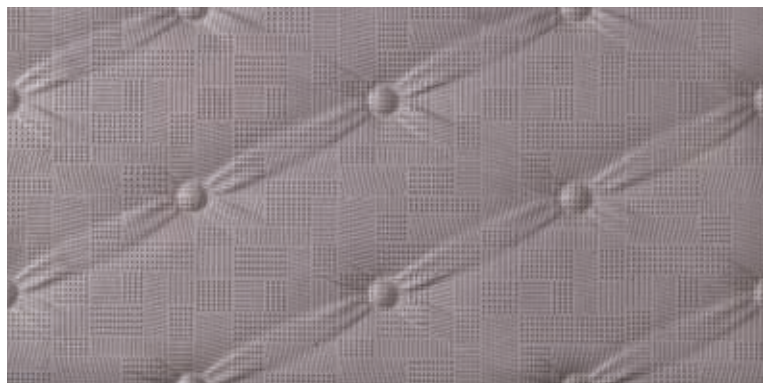
25x50 . 10"x20"



Modulo BT210 porpora



25x50 . 10"x20"



Fascia pouf porpora



4,5x50 . 1⁷/₈"x20"



Listello pouf porpora



Batik

25x50 . 10"x20"



Composizione silk indaco (3 pezzi)

6 094

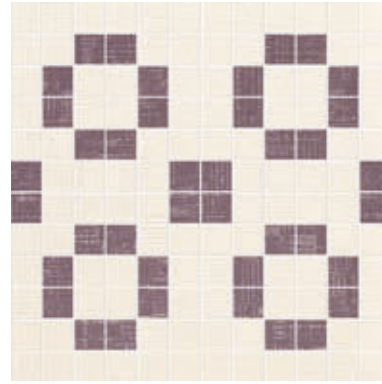
8x50 . 3 1/4"x20"



Listello silk indaco

6 051

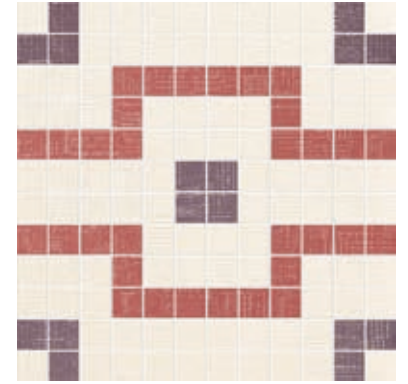
25x25 . 10"x10"



Mosaico bloom porpora

9 138

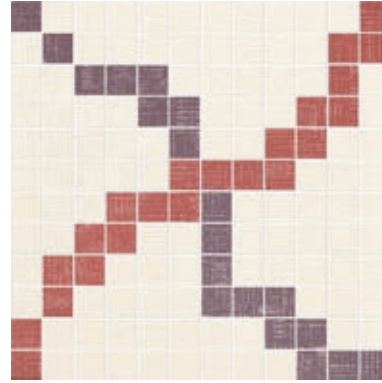
25x25 . 10"x10"



Mosaico tango moyen

9 138

25x25 . 10"x10"



Mosaico zig-zag moyen

9 138

0,6x25 . 3/4"x10"

Listello pois porpora

6 035

0,6x25 . 3/4"x10"

Listello pois metal

6 041

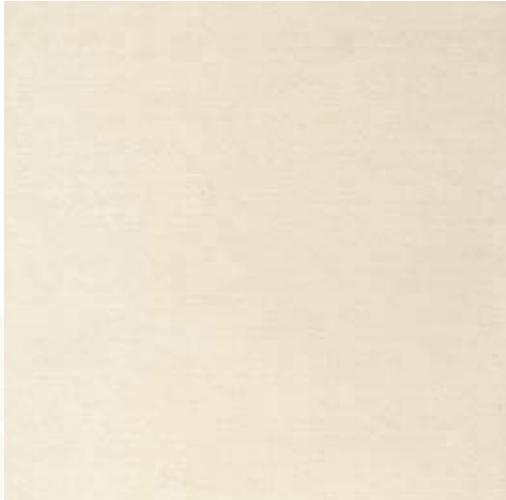
3x25 . 1 1/4"x10"



Listello kilim

6 041

33,3x33,3 . 13"x13"



BT300 Riso

13 089

33,3x33,3 . 13"x13"



BT310 Porpora

13 089

Pavimento - Gres Porcellanato

Floor Tile - Porcelain Stoneware

Sol - Gres Cerame

Fussboden - Feinsteinzeug

Пол - Керамогранит

isla

FASCINO ITALIANO

25x50 . 10"x20"



BT20 Riso



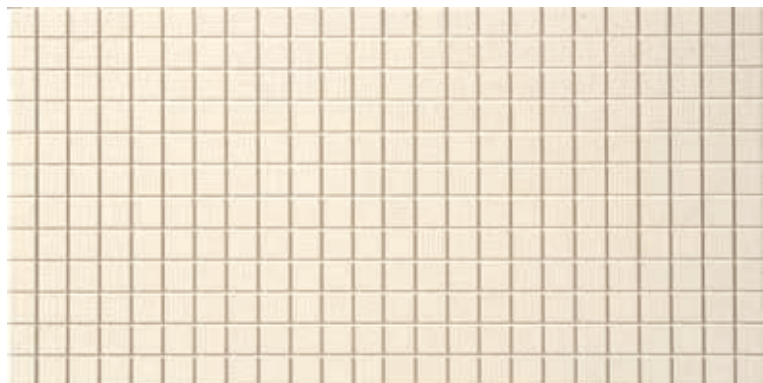
25x50 . 10"x20"



BT240 Zafferano



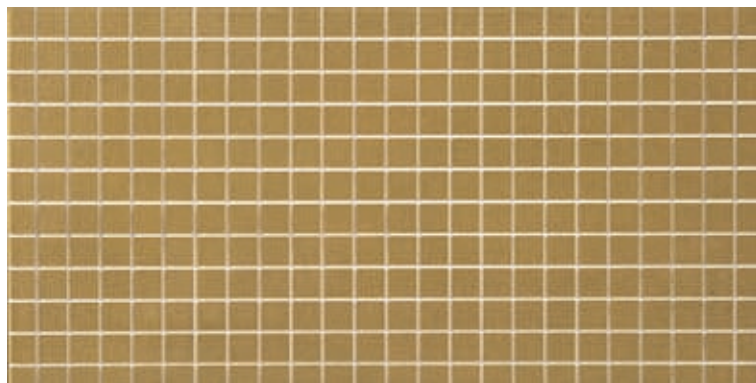
25x50 . 10"x20"



Modulo BT20 riso



25x50 . 10"x20"



Modulo BT240 zafferano



25x50 . 10"x20"



Fascia pouf zafferano



4,5x50 . 1⁷/₈"x20"



Listello pouf zafferano



2,5x50 . 1"x20"



Listello java zafferano



Batik

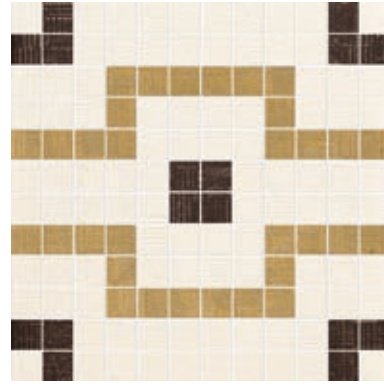
25x50 . 10"x20"



Composizione silk cacao (3 pezzi)

6 094

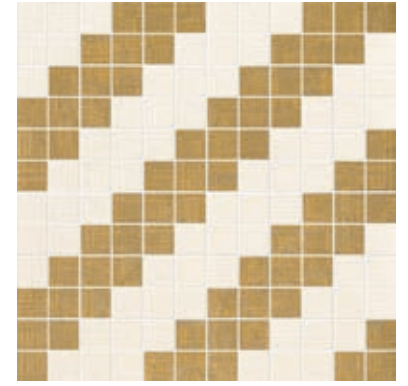
25x25 . 10"x10"



Mosaico tango chaud

9 138

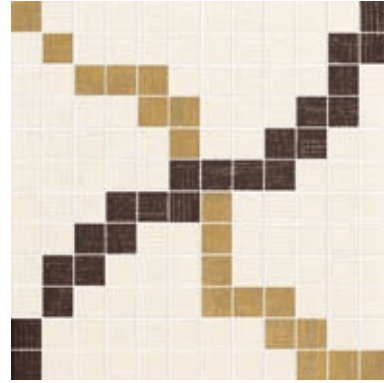
25x25 . 10"x10"



Mosaico spinato zafferano

9 138

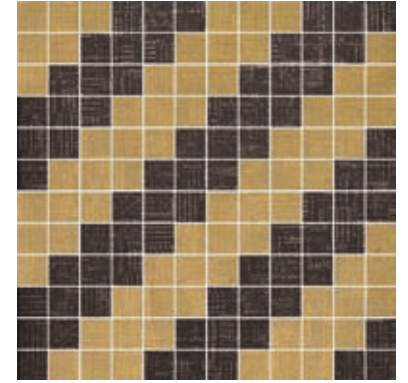
25x25 . 10"x10"



Mosaico zig-zag chaud

9 138

25x25 . 10"x10"



Mosaico spinato cacao

9 138

8x50 . 3 1/4"x20"



Listello silk cacao

6 051

0,6x25 . 3/4"x10"



Listello pois bronze

6 041

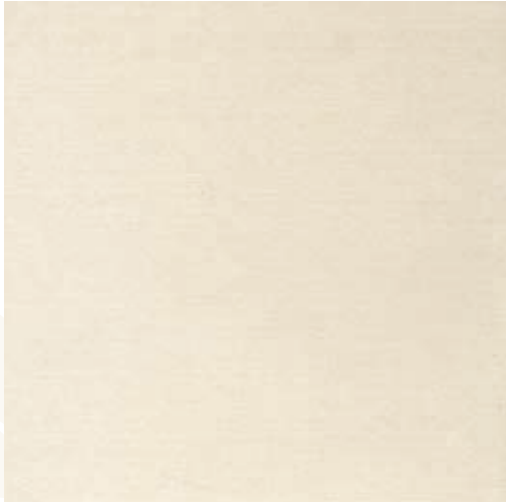
3x25 . 1 1/4"x10"



Listello kilim

6 041

33,3x33,3 . 13"x13"



BT300 Riso

13 089

33,3x33,3 . 13"x13"



BT340 Zafferano

13 089

Pavimento - Gres Porcellanato

Floor Tile - Porcelain Stoneware

Sol - Gres Cerame

Fussboden - Feinsteinzeug

Пол - Керамогранит

25x50 . 10"x20"



BT20 Riso



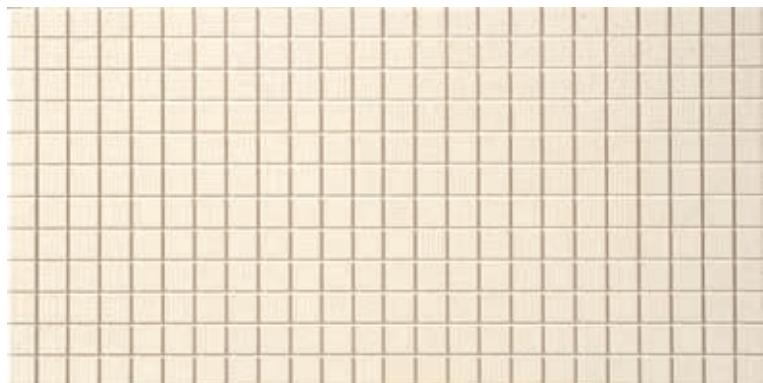
25x50 . 10"x20"



BT260 Cenere



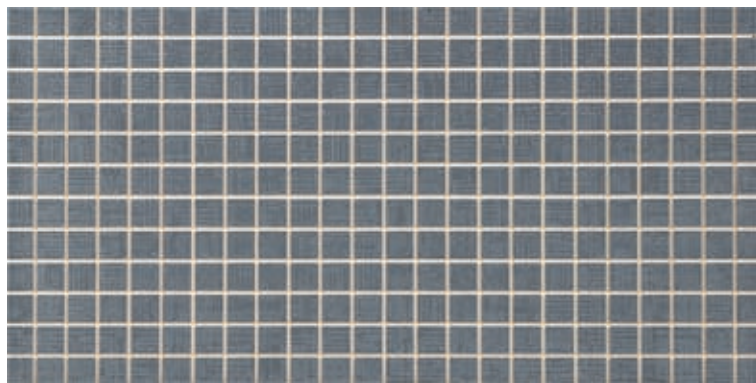
25x50 . 10"x20"



Modulo BT20 riso



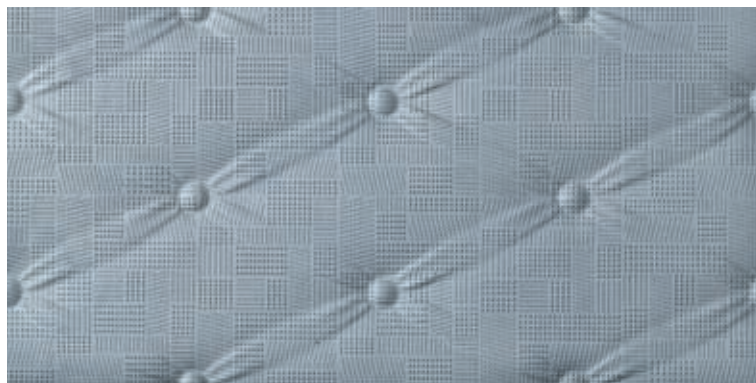
25x50 . 10"x20"



Modulo BT260 cenere



25x50 . 10"x20"



Fascia pouf cenere



4,5x50 . 1⁷/₈"x20"



Listello pouf cenere



Batik

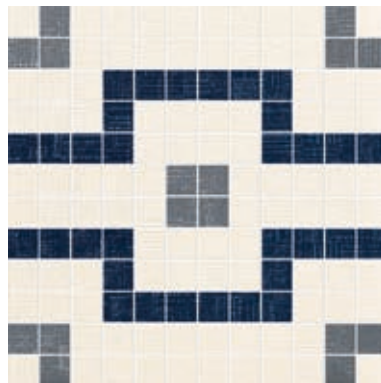
25x50 . 10"x20"



Composizione silk indaco (3 pezzi)



25x25 . 10"x10"



Mosaico tango froid



25x25 . 10"x10"



Mosaico zig-zag froid



8x50 . 3 1/4"x20"



Listello silk indaco



0,6x25 . 3/4"x10"

Listello pois metal



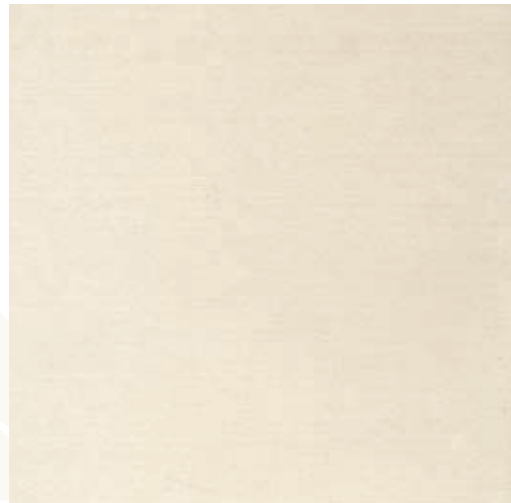
3x25 . 1 1/4"x10"



Listello kilim



33,3x33,3 . 13"x13"



Pavimento - Gres Porcellanato

Floor Tile - Porcelain Stoneware

Sol - Gres Cerame

Fussboden - Feinsteinzeug

Пол - Керамогранит

BT300 Riso



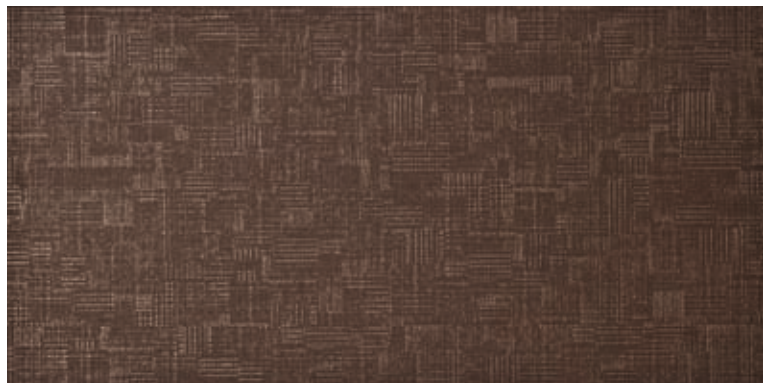
25x50 . 10"x20"



BT20 Riso



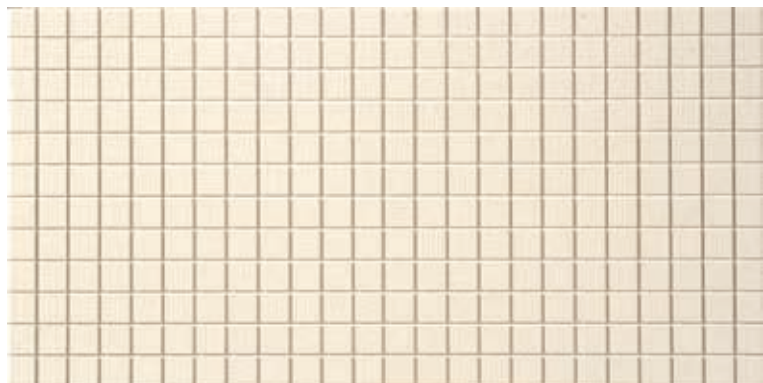
25x50 . 10"x20"



BT230 Cacao



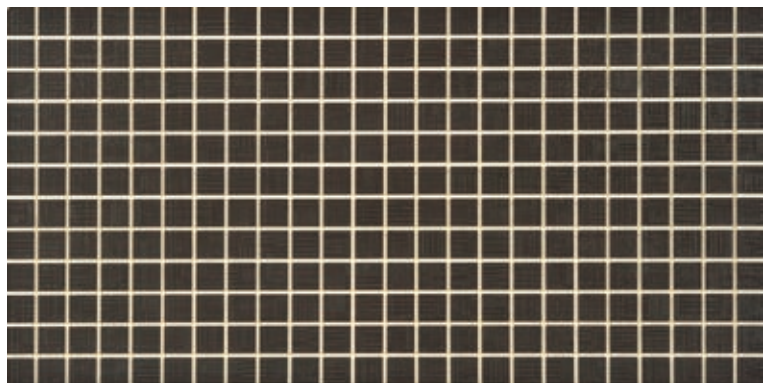
25x50 . 10"x20"



Modulo BT20 riso



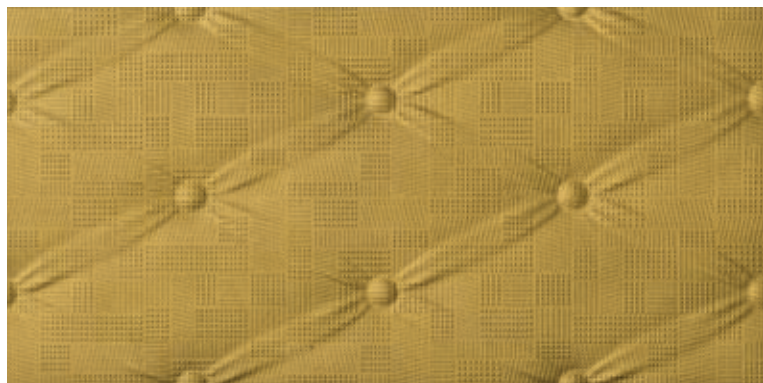
25x50 . 10"x20"



Modulo BT230 cacao



25x50 . 10"x20"



Fascia pouf zafferano



4,5x50 . 1⁷/₈"x20"



Listello pouf zafferano



2,5x50 . 1"x20"



Listello java zafferano



4x50 . 1³/₄"x20"



Listello kebaya cacao



Batik

25x50 . 10"x20"



Composizione silk cacao (3 pezzi)

6 094

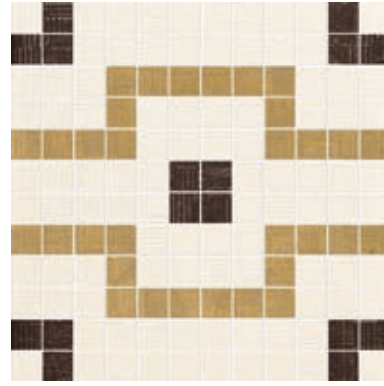
8x50 . 3 1/4"x20"



Listello silk cacao

6 051

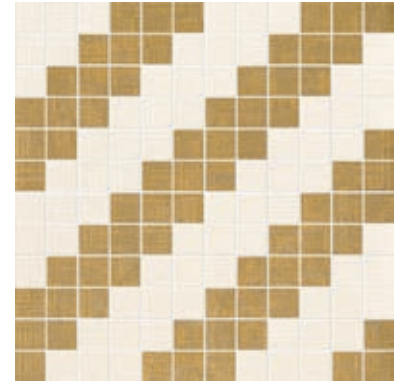
25x25 . 10"x10"



Mosaico tango chaud

9 138

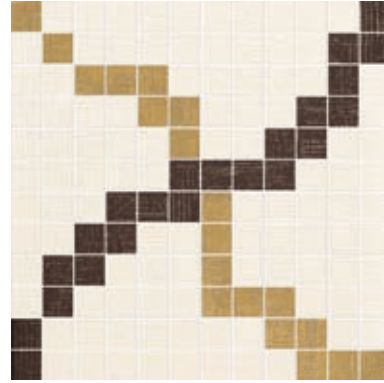
25x25 . 10"x10"



Mosaico spinato zafferano

9 138

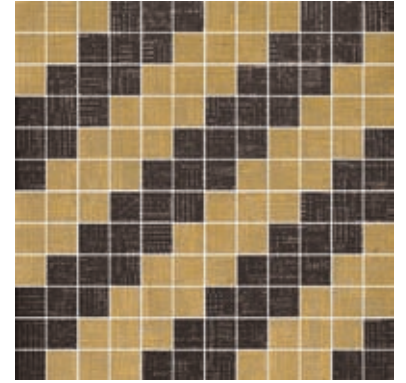
25x25 . 10"x10"



Mosaico zig-zag chaud

9 138

25x25 . 10"x10"



Mosaico spinato cacao

9 138

0,6x25 . 3/4"x10"

Listello pois bronze

6 041

0,6x25 . 3/4"x10"

Listello pois metal

6 041

3x25 . 1 1/4"x10"



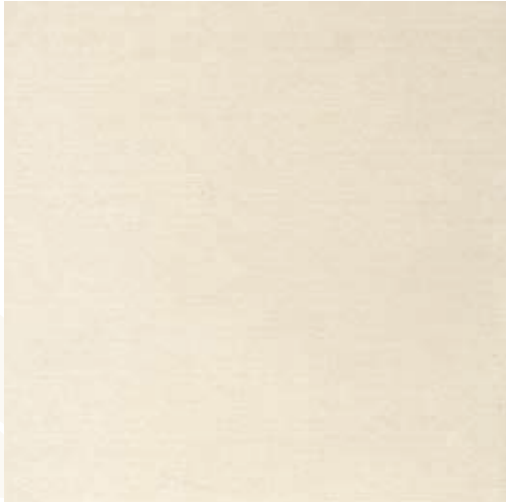
Listello kilim

6 041

Pavimento - Gres Porcellanato

Floor Tile - Porcelain Stoneware . Sol - Gres Cerame . Fussboden - Feinsteinzeug . Пол - Керамогранит

33,3x33,3 . 13"x13"



BT300 Riso

13 089

33,3x33,3 . 13"x13"



BT340 Zafferano

13 089

33,3x33,3 . 13"x13"



BT330 Cacao

13 089

25x50 . 10"x20"



BT20 Riso



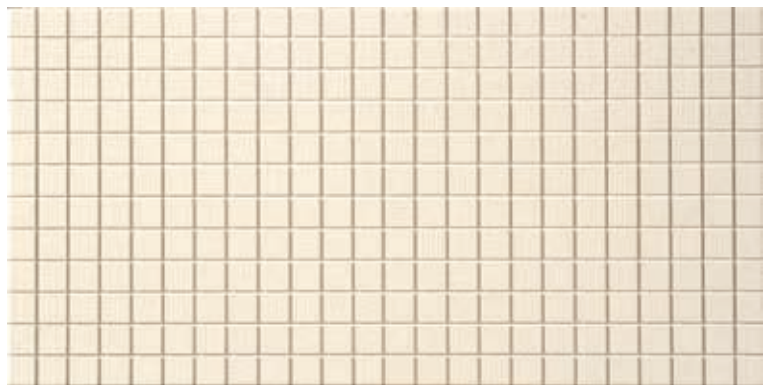
25x50 . 10"x20"



BT220 Ribes



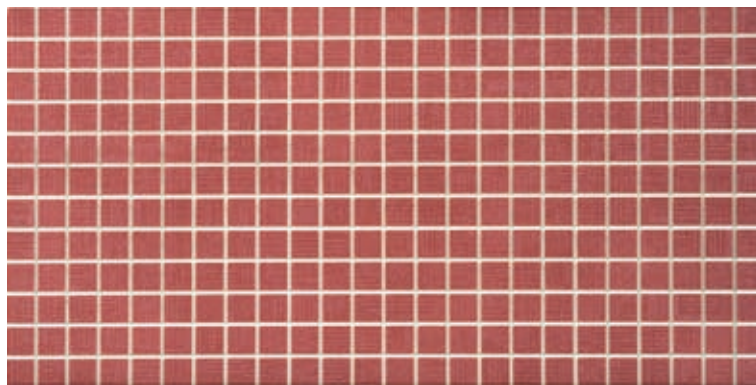
25x50 . 10"x20"



Modulo BT20 riso



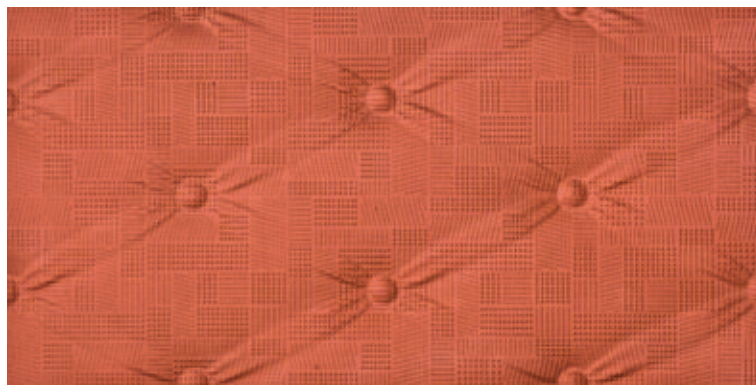
25x50 . 10"x20"



Modulo BT220 ribes



25x50 . 10"x20"



Fascia pouf ribes



4,5x50 . 1⁷/₈"x20"



Listello pouf ribes



2,5x50 . 1"x20"



Listello java zafferano



Batik

25x50 . 10"x20"



Composizione silk cacao (3 pezzi)

6 094

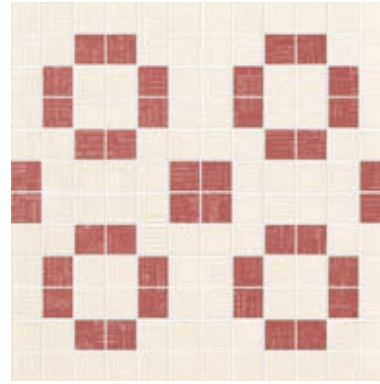
8x50 . 3 1/4"x20"



Listello silk cacao

6 051

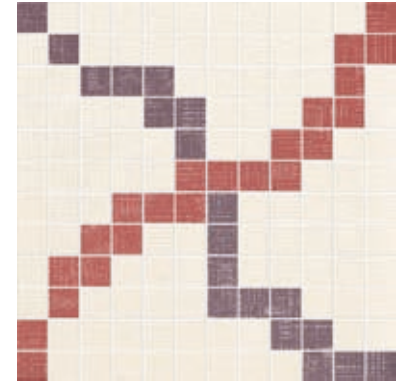
25x25 . 10"x10"



Mosaico bloom ribes

9 138

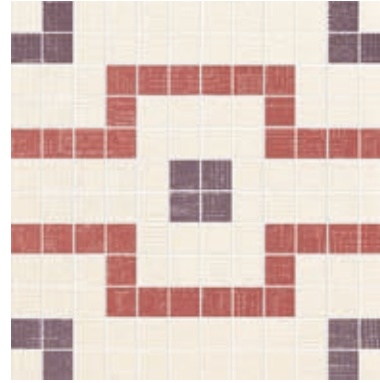
25x25 . 10"x10"



Mosaico zig-zag moyen

9 138

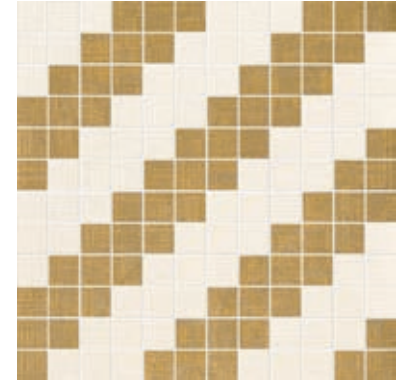
25x25 . 10"x10"



Mosaico tango moyen

9 138

25x25 . 10"x10"



Mosaico spinato zafferano

9 138

0,6x25 . 3/4"x10"

Listello pois bronze

6 041

0,6x25 . 3/4"x10"

Listello pois ribes

6 035

3x25 . 1 1/4"x10"



Listello kilim

6 041

33,3x33,3 . 13"x13"



BT300 Riso

13 089

33,3x33,3 . 13"x13"



BT320 Ribes

13 089

Pavimento - Gres Porcellanato

Floor Tile - Porcelain Stoneware

Sol - Gres Cerame

Fussboden - Feinsteinzeug

Пол - Керамогранит

25x50 . 10"x20"



BT20 Riso



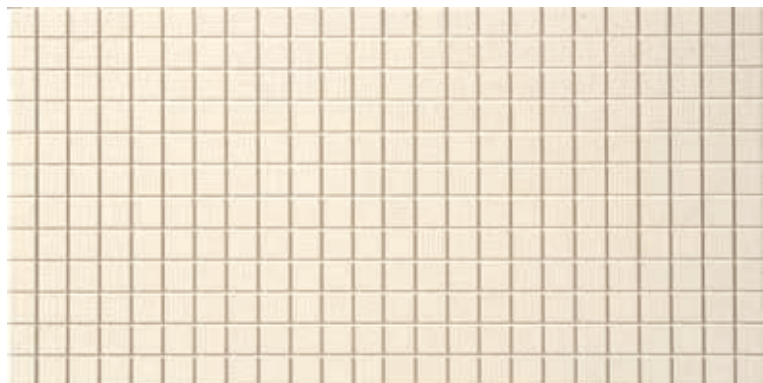
25x50 . 10"x20"



BT250 Indaco



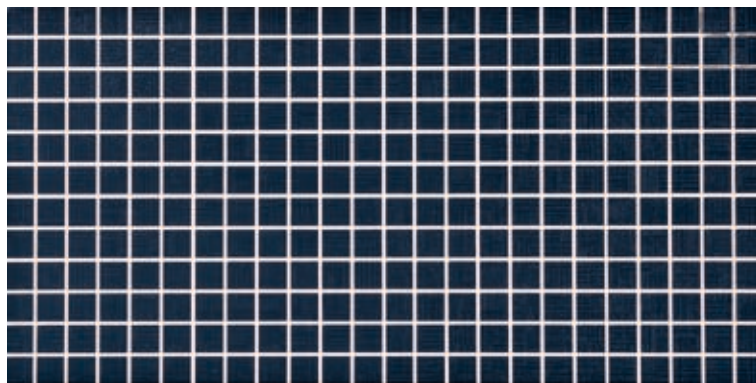
25x50 . 10"x20"



Modulo BT20 riso



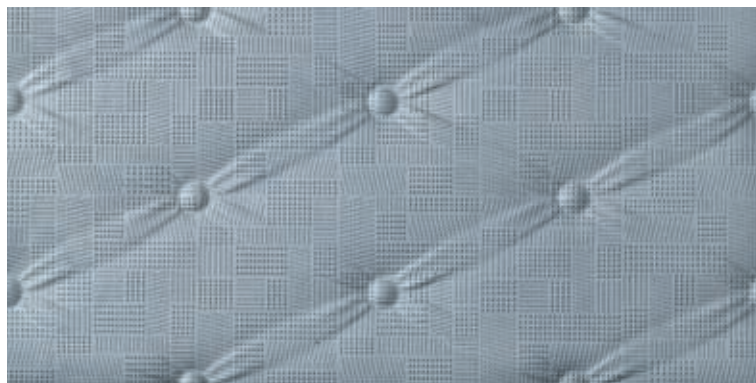
25x50 . 10"x20"



Modulo BT250 indaco



25x50 . 10"x20"



Fascia pouf cenere



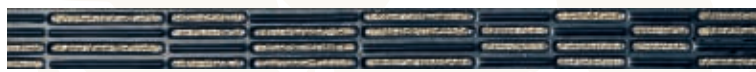
4,5x50 . 1⁷/₈"x20"



Listello pouf cenere



4x50 . 1³/₄"x20"



Listello kebaya indaco



Batik

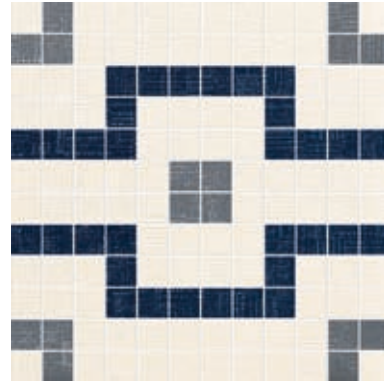
25x50 . 10"x20"



Composizione silk indaco (3 pezzi)

6 094

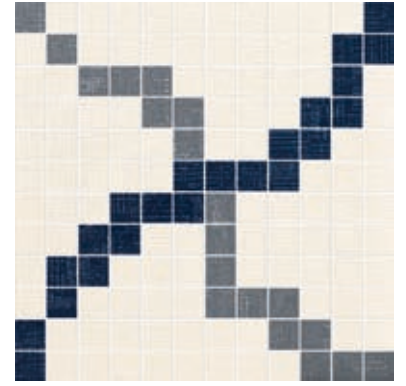
25x25 . 10"x10"



Mosaico tango froid

9 138

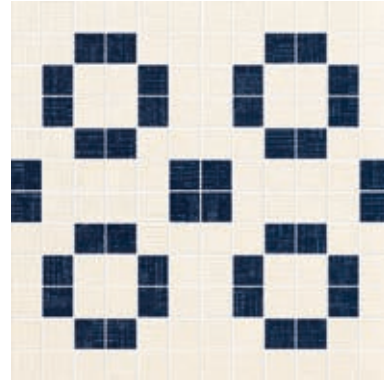
25x25 . 10"x10"



Mosaico zig-zag froid

9 138

25x25 . 10"x10"



Mosaico bloom indaco

9 138

8x50 . 3 1/4"x20"



Listello silk indaco

6 051

0,6x25 . 3/4"x10"



Listello pois metal

6 041

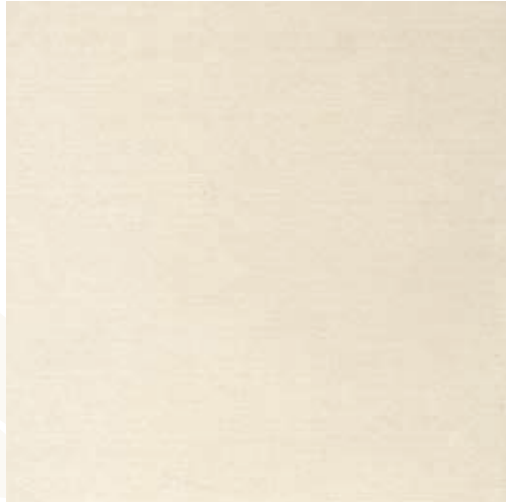
3x25 . 1 1/4"x10"



Listello kilim

6 041

33,3x33,3 . 13"x13"



Pavimento - Gres Porcellanato

Floor Tile - Porcelain Stoneware

Sol - Gres Cerame

Fussboden - Feinsteinzeug

Пол - Керамогранит

BT300 Riso

13 089

Batik

Pezzi Speciali

Special pieces
Pieces speciales
Formteile
СПЕЦИАЛЬНЫЕ ИЗДЕЛИЯ



Coprifilo*



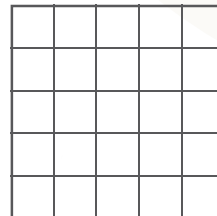
1,2x25 . 1/2"x10"



Angolo coprifilo*



H. 1,2



Mosaico gres*



33,3x33,3 . 13"x13"

*Disponibile su tutti i colori

Available on all colours
Disponibile sur tout les couleurs
Verfügbar in allen Farben
Димеється в распоряженні дпд всіх цвeтoв


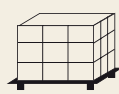
Mosaico BT300 Riso

Mosaico BT310 Porpora


Mosaico BT320 Ribes

Mosaico BT330 Cacao

Mosaico BT340 Zafferano

Tabella imballi Packaging Emballages Verpackungen Упаковки						
	Formato Size Format Format Формат	Pezzi per collo Pcs for box Pcs boîte Stückzahl pro Kar Штук на место	Mq per collo Sqm for box M2/boite qM pro kart Кв.м на место	Kg per collo Kgs for box Kg/boite Gewicht pro Kart Кг на место	Colli per paletta Boxes for pallet Boite/pal Kartonanzahl pro Pal. мест на поддон	Mq per paletta Sqm for pallet M2/pal Mq pro Palette Кв.м на поддон
25x50	12	1,50	21,60	36	54,00	777,60
25x50 Modulo	12	1,50	22,40	36	54,00	806,40
33,3x33,3 Mosaico gres	10	1,11	21,00	45	49,95	945,00
33,3x33,3 Pav.	13	1,44	26,40	44	63,36	1.161,60

Caratteristiche tecniche - Technical Features - Caractéristiques Techniques - Technische Daten - Техническая характеристика

	Spessore Thickness - Epaisseur Dicke - Толщина	Norme Regulation - Norme Norm - Норма
	9 mm	ISO10545 - 2



Batik

PROGETTO GRAFICO:
eurekaMedia

COORDINAMENTO:
UFF. MKTG ISLA TILES

SETTEMBRE 2008

isla ■

FASCINO ITALIANO

ISLA TILES spa
Via Isola 2,4,6
42030 Viano (RE)
Tel. 0522 760711
Fax 0522 988419
Fax export 0522 760713
islatile.it
islatile@islatile.it

isla ■

FASCINO ITALIANO



Ceramic Tiles of Italy