

MOSAICO IN MONOCOTTURA
SINGLE-FIRED MOSAIC
MOSAÏQUE EN MONOCUISSON
STEINZEUG-MOSAÏK
MOSAICO EN MONOCOCCIÓN
МОЗАИКА ИЗ ПЛИТКИ ОДНОКРАТНОГО ОБЖИГА

Formato - Spessore / Size - Thickness
Format - Epaisseur / Format - Stärke
Formato - Espesor / Размер - Толщина

Superficie / Surface
Surface / Oberfläche
Superficie / Поверхность

10x10 (4"x4") - 9,5 mm

SATINATA
SATIN
SATINÉE
SATINIÈRE
SATINADA
ГЛЯНЦЕВАЯ

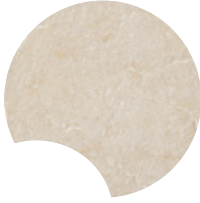
Colori / Colours
Couleurs / Farben / Colores / Цвета



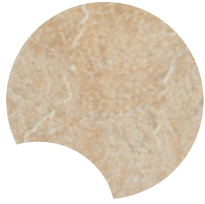
Bianco Apuano



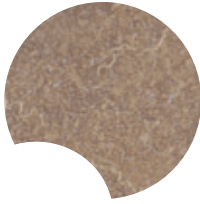
Biancone



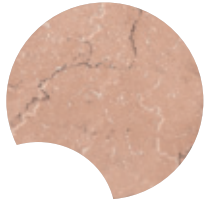
Crema Trani



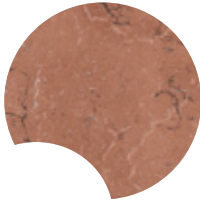
Travertino Chiaro



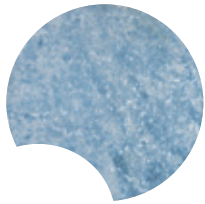
Travertino Noce



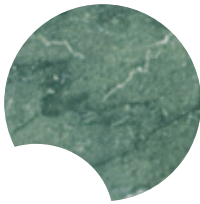
Rosa Perlino



Rosso Verona



Azul Cielo





Verde Aosta

Caratteristiche tecniche / Technical data

Caracteristiques techniques / Technische daten / Características técnicas / Технические характеристики

Conforme alla norma	EN 14411 (ISO 13006)	Appendice	K	Gruppo	BIIb
Complies with	EN 14411 (ISO 13006)	Appendix	K	Group	BIIb
Conforme à la norme	EN 14411 (ISO 13006)	Appendice	K	Groupe	BIIb
Entsprechend	EN 14411 (ISO 13006)	Anhang	K	Gruppe	BIIb
Conforme a la norma	EN 14411 (ISO 13006)	Apéndice	K	Grupo	BIIb
Соответствует норме	EN 14411 (ISO 13006)	Приложение	K	Группа	BIIb

 ISO 10545-2
CONFORME / SUITABLE FOR

 ISO 10545-4
S ≥800 N R ≥18 N/mm²

 ISO 10545-13
RESISTE / RESISTANT

 ISO 10545-14
5

Pavimento coordinato - Caratteristiche tecniche / Suitable floor ceramic tiles - Technical data

Carreaux de sol conseilles - Caracteristiques techniques / Passende bodenfliesen - Technische daten

Pavimento coordinado - Características técnicas / Рекомендованная напольная плитка - Технические характеристики

GRES PORCELLANATO SMALTATO
GLAZED PORCELAIN STONEWARE
GRES CERAME EMAILLE
GLASIERTES FEINSTEINZEUG
GRES PORCELÁNICO ESMALTADO
ГЛАЗУРОВАННЫЙ КЕРАМИЧЕСКИЙ ГРАНИТ

Formato - Spessore
Size - Thickness
Format - Epaisseur
Format - Stärke
Formato - Espesor
Размер - Толщина

Superficie
Surface
Surface
Oberfläche
Superficie
Поверхность

30x30 (12"x12") - 9,5 mm


SATINATA
SATIN
SATINÉE
SATINIÈRE
SATINADA
ГЛЯНЦЕВАЯ


Conforme alla norma	EN 14411 (ISO 13006)	Appendice	G	Gruppo	Bla
Complies with	EN 14411 (ISO 13006)	Appendix	G	Group	Bla
Conforme à la norme	EN 14411 (ISO 13006)	Appendice	G	Groupe	Bla
Entsprechend	EN 14411 (ISO 13006)	Anhang	G	Gruppe	Bla
Conforme a la norma	EN 14411 (ISO 13006)	Apéndice	G	Grupo	Bla
Соответствует норме	EN 14411 (ISO 13006)	Приложение	G	Группа	Bla

 ISO 10545-2
±0,3%

 ISO 10545-2
±0,3%

 EN 101
CONFORME / SUITABLE FOR

 ISO 10545-4
S ≥1500 N R ≥40 N/mm²

 ISO 10545-13
RESISTE / RESISTANT

 ISO 10545-14
5

PEI: Travertino Chiaro: PEI 4 / Biancone, Bianco Apuano: PEI 5



STONE&MARBLE



AC70 Crema Trani 10
10x10 - 4"x4"



AC71 Travertino Chiaro 10
10x10 - 4"x4"



AC72 Travertino Noce 10
10x10 - 4"x4"



AC60 Biancone 10
10x10 - 4"x4"



AC61 Rosa Perlino 10
10x10 - 4"x4"



AC62 Rosso Verona 10
10x10 - 4"x4"



AC67 Bianco Apuano 10
10x10 - 4"x4"



AC68 Azul Cielo 10
10x10 - 4"x4"



AC69 Verde Aosta 10
10x10 - 4"x4"

STONE&MARBLE



10T7 Crema Trani
10 Ins. T *
10x10 - 4"x4"



LOT2 Crema/Travertino 10 List. T *
3x20 - 1,2"x8"



10T8 Travertino
Chiaro 10 Ins. T *
10x10 - 4"x4"



10FT Crema/Travertino
10 Ins. FO
10x10 - 4"x4"



LOFT Crema/Travertino 10 List. FO
2x20 - 0,8"x8"



10M7 Crema Trani
10 Ins. M
10x10 - 4"x4"



LOM7 Crema Trani 10 List. M
4x10 - 1,6"x4"



10ST Travertino
10 Ins. S
10x10 - 4"x4"



LOST Travertino 10 List. S
5x10 - 1"x4"



10t1 Stone&Marble 10 Frutta Mix 3 Crema *
10x10 - 4"x4"



10T1 Biancone
10 Ins. T *
10x10 - 4"x4"



LOT3 Biancone/Rosa 10 List. T *
3x20 - 1,2"x8"



10T2 Rosa Perlino
10 Ins. T *
10x10 - 4"x4"



10FR Biancone/Rosa
10 Ins. FO
10x10 - 4"x4"



LOFR Biancone/Rosa 10 List. FO
2x20 - 0,8"x8"



10M1 Biancone
10 Ins. M
10x10 - 4"x4"



LOM1 Biancone 10 List. M
4x10 - 1,6"x4"



10V3 Biancone/Rosa
10 Ins. V ✓
10x10 - 4"x4"



LOV3 Biancone/Rosa 10 List. V ✓
3x20 - 1,2"x8"



10T4 Bianco Apuano
10 Ins. T *
10x10 - 4"x4"



LOT1 Azul/Verde 10 List. T *
3x20 - 1,2"x8"



10FA Bianco/Azul
10 Ins. FO
10x10 - 4"x4"



LOFa Bianco/Azul 10 List. FO
2x20 - 0,8"x8"



10FV Bianco/Verde
10 Ins. FO
10x10 - 4"x4"



LOFv Bianco/Verde 10 List. FO
2x20 - 0,8"x8"



10M4 Bianco Apuano
10 Ins. M
10x10 - 4"x4"



LOM4 Bianco Apuano 10 List. M
4x10 - 1,6"x4"



10V2 Azul/Verde
10 Ins. V ✓
10x10 - 4"x4"



LOV2 Azul/Verde 10 List. V ✓
3x20 - 1,2"x8"

* Inserti in marmo naturale.
Inserts in natural marble.
Listels en marbre naturel.
Intarsien aus Naturmarmor.
Inserciones en mármol natural.
элементы из натурального мрамора.











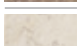


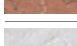
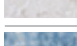
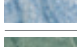
✓ Inserti in vetro. Da posare utilizzando solamente colla bianca uniformemente distribuita.
Glass inserts. Laid using only white glue distributed evenly.
Inserts en verre. A poser exclusivement avec de la colle blanche répartie uniformément.
Glaseinleger. Zum Verlegen nur weißen, gleichmäßig verteilten Kleber verwenden.
Inserciones en vidrio. Colocar utilizando únicamente cola blanca distribuida uniformemente.
Вставки из стекла. Для укладки применять только белый клей, равномерно распределяя.

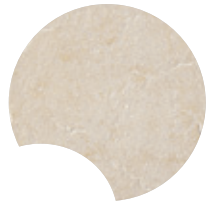
STONE&MARBLE



Pezzi speciali / Special pieces

Pièces spéciales / Sonderteile / Piezas especiales / Специальные элементы

	 5,5x10 - 2,2"x4" Listello P	 H. 5,5 - H. 2,2" Listello P A/E	 3x10 - 1,2"x4" Canaletta	 3x3 - 1,2"x1,2" Canaletta Angolo	 2x10 - 0,8"x4" Listello B	 H. 2 - H. 0,8" Listello B A/E	 8x30 - 3,2"x12" Battiscopa
 Crema Trani	LQp7	1Qp7	Lqc7	1qc7	LQb7	1Qb7	-
 Travertino Chiaro	LQp8	1Qp8	Lqc8	1qc8	LQb8	1Qb8	6QX8
 Travertino Noce	LQp9	1Qp9	Lqc9	1qc9	LQb9	1Qb9	-
 Biancone	LQp1	1Qp1	Lqc1	1qc1	LQb1	1Qb1	6QX1
 Rosa Perlino	LQp2	1Qp2	Lqc2	1qc2	LQb2	1Qb2	-
 Rosso Verona	LQp3	1Qp3	Lqc3	1qc3	LQb3	1Qb3	-
 Bianco Apuano	LQp4	1Qp4	Lqc4	1qc4	LQb4	1Qb4	6QX4
 Azul Cielo	LQp5	1Qp5	Lqc5	1qc5	LQb5	1Qb5	-
 Verde Aosta	LQp6	1Qp6	Lqc6	1qc6	LQb6	1Qb6	-



Crema Trani

DECK ✕



Wengè Frassino

AUTENTICA +

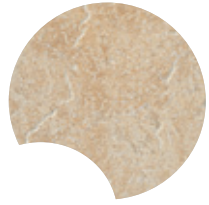


Cardona

DOGA ✕



Cocoa Vanilla



Travertino Chiaro



3QX8 Travertino Chiaro ▲
 30x30 - 12"x12"

DECK ✕



Wengè Frassino

AUTENTICA +

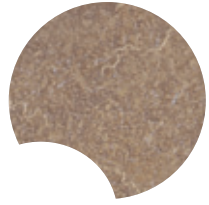


Cardona

DOGA ✕



Cocoa Vanilla



Travertino Noce

DECK ✕



Wengè Frassino

AUTENTICA +



Cardona

DOGA ✕



Cocoa Vanilla

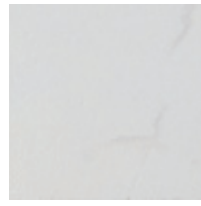


Bianco Apuano

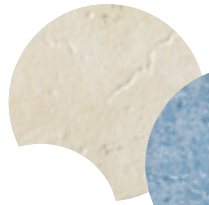


Rosa Perlino

Rosso Verona



3QX4 Bianco Apuano ▲
 30x30 - 12"x12"

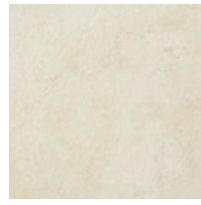


Biancone



Azul Cielo

Verde Aosta



3QX1 Biancone ▲
 30x30 - 12"x12"

▲ GRES PORCELLANATO SMALTATO / GLAZED PORCELAIN STONWARE
 GRES CERAME EMAILLE / GLASIERTES FEINSTEINZEUG
 GRES PORCELÁNICO ESMALTADO / ГЛАЗУРОВАННЫЙ КЕРАМИЧЕСКИЙ ГРАНИТ

✕ GRES PORCELLANATO COLORATO IN MASSA / COLOURED IN BODY PORCELAIN STONWARE
 GRES CERAME COLORÉ DANS LA MASSE / DURCHGEFÄRBTES FEINSTEINZEUG
 GRES PORCELÁNICO COLOREADO EN MASA / КЕРАМИЧЕСКИЙ ГРАНИТ ОКРАШЕННЫЙ В МАССЕ

♦ GRES PORCELLANATO TECNICO / TECHNICAL PORCELAIN STONWARE
 GRES CERAME TECHNIQUE / TECHNISCHES FEINSTEINZEUG
 GRES PORCELÁNICO TECNICO / ТЕХНИЧЕСКИЙ КЕРАМИЧЕСКИЙ ГРАНИТ