

GRES PORCELLANATO COLORATO IN MASSA  
COLOURED IN BODY PORCELAIN STONEWARE  
GRÈS CÉRAMÉ COLORÉ DANS LA MASSE  
DURCHGEFÄRBTES FEINSTEINZEUG  
GRES PORCELÁNICO COLOREADO EN MASA  
КЕРАМИЧЕСКИЙ ГРАНИТ ОКРАШЕННЫЙ В МАССЕ

RETTIFICATO MONOCALIBRO  
RECTIFIED MONOCALIBRE  
RECTIFIE MONO-CALIBRE  
GESCHLIFFEN EINKALIBRIG  
RECTIFICADO MONOCALIBRE  
РЕТИФИЦИРОВАННАЯ В ОДНОМ КАЛИБРЕ

Formato - Spessore / Size - Thickness  
Format - Epaisseur / Format - Stärke  
Formato - Espesor / Размер - Толщина

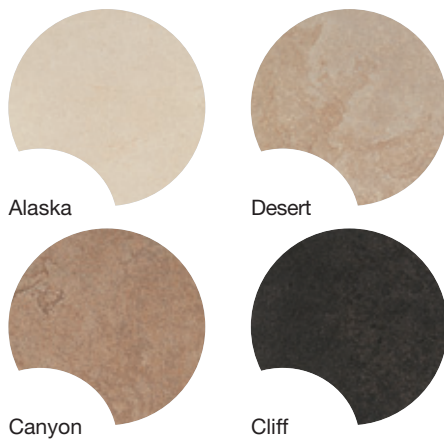
60x60 (24"x24") - 10 mm  
30x60 (12"x24") - 10 mm  
45x45 (18"x18") - 9,5 mm  
30x30 (12"x12") - 9,5 mm

Superfici / Surfaces  
Surfaces / Oberflächen  
Superficies / Поверхности

MATT, LAPPATO, STRUTTURATO  
MATT, HONED, TEXTURED  
MAT, ADOUCI, STRUCTURÉ  
MATT, GELÄPPT, STRUKTURIERT  
MATE, LAPPATO, ESTRUCTURADO  
МАТОВЫЙ, ПОЛУПОЛИРОВАННЫЙ, СТРУКТУРНАЯ



Colori / Colours  
Couleurs / Farben / Cores / Цвета



Caratteristiche tecniche / Technical data  
Caracteristiques techniques / Technische daten / Características técnicas / Технические характеристики

Conforme alla norma	EN 14411 (ISO 13006)	Appendice	G	Gruppo	Bla
Complies with	EN 14411 (ISO 13006)	Appendix	G	Group	Bla
Conforme à la norme	EN 14411 (ISO 13006)	Appendice	G	Groupe	Bla
Entsprechend	EN 14411 (ISO 13006)	Anhang	G	Gruppe	Bla
Conforme a la norma	EN 14411 (ISO 13006)	Apéndice	G	Grupo	Bla
Соответствует норме	EN 14411 (ISO 13006)	Приложение	G	Группа	Bla

Matt / Matt 60x60 (24"x24") 30x60 (12"x24") 45x45 (18"x18") 30x30 (12"x12")	Lappato / Honed 60x60 (24"x24") 45x45 (18"x18")	Strutturato / Textured 30x60 (12"x24")
---	---	---

ISO 10545-2 ±0,1%	ISO 10545-2 ±0,1%	ISO 10545-2 ±0,1%
ISO 10545-2 ±0,3%	ISO 10545-2 ±0,2%	ISO 10545-2 NON APPLICABILE / NOT APPLICABLE
ISO 10545-3 ≤0,1%	ISO 10545-3 ≤0,1%	ISO 10545-3 ≤0,1%
ISO 10545-4 S ≥2000 N R ≥45 N/mm <sup>2</sup>	ISO 10545-4 S ≥2000 N R ≥45 N/mm <sup>2</sup>	ISO 10545-4 S ≥2000 N R ≥45 N/mm <sup>2</sup>
EN 101 MOHS 7	EN 101 MOHS 5	EN 101 MOHS 8
ISO 10545-6 ≤150 mm <sup>3</sup>	ISO 10545-6 ≤150 mm <sup>3</sup>	ISO 10545-6 ≤150 mm <sup>3</sup>
ISO 10545-8 ≤7 MK <sup>1</sup>	ISO 10545-8 ≤7 MK <sup>1</sup>	ISO 10545-8 ≤7 MK <sup>1</sup>
ISO 10545-9 RESISTE / RESISTANT	ISO 10545-9 RESISTE / RESISTANT	ISO 10545-9 RESISTE / RESISTANT
ISO 10545-12 RESISTE / RESISTANT	ISO 10545-12 RESISTE / RESISTANT	ISO 10545-12 RESISTE / RESISTANT
METODO B.C.R.A. >0,40	METODO B.C.R.A. >0,40	METODO B.C.R.A. >0,40
ASTM C 1028 (S.C.O.F.) ≥0,60 DRY ≥0,60 WET	ASTM C 1028 (S.C.O.F.) ≥0,60 DRY 0,5+0,60 WET	ASTM C 1028 (S.C.O.F.) ≥0,60 DRY ≥0,60 WET
DIN 51130 R9	DIN 51130 N.C.	DIN 51130 R11
ISO 10545-13 RESISTE / RESISTANT	ISO 10545-13 RESISTE / RESISTANT	ISO 10545-13 RESISTE / RESISTANT
ISO 10545-14 5	ISO 10545-14 5	ISO 10545-14 5

Superfici alternative / Alternative surfaces  
Autres surfaces / Alternative Oberflächen  
Superficies alternativas / Альтернативные поверхности



Lappato / Honed  
Adoucie / Geläpft  
Lappato / Полуполированный

Strutturato / Textured  
Structuré / Strukturiert  
Estructurado / Структурная







7X11 Alaska 60 Rettificato  
60x60 - 24"x24"



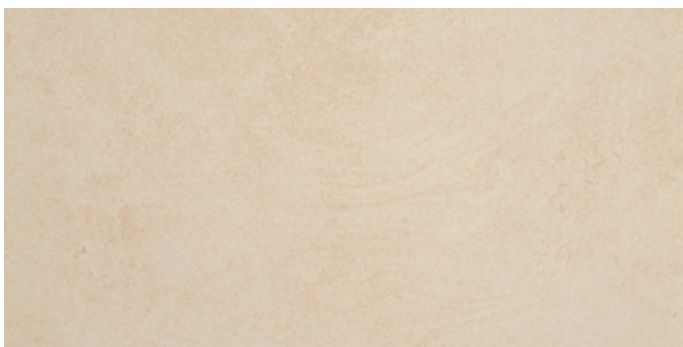
7xL1 Alaska 60 Lappato  
60x60 - 24"x24"



5X11 Alaska 45 Rettificato  
45x45 - 18"x18"



5xL1 Alaska 45 Lappato  
45x45 - 18"x18"



5x11 Alaska 30x60 Rettificato  
30x60 - 12"x24"



3X11 Alaska 30 Rettificato  
30x30 - 12"x12"



**V3**  
Alta - High  
Haut - Kräftigere  
Alta - Высокое



7X12 Desert 60 Rettificato  
60x60 - 24"x24"



7xL2 Desert 60 Lappato  
60x60 - 24"x24"



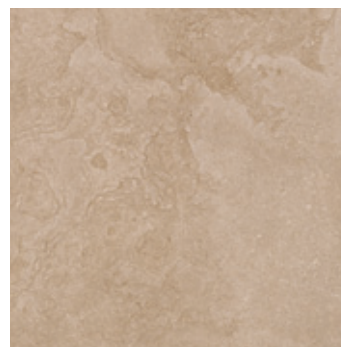
5X12 Desert 45 Rettificato  
45x45 - 18"x18"



5xL2 Desert 45 Lappato  
45x45 - 18"x18"



5x12 Desert 30x60 Rettificato  
30x60 - 12"x24"



3X12 Desert 30 Rettificato  
30x30 - 12"x12"







7X13 Canyon 60 Rettificato  
60x60 - 24"x24"



7xL3 Canyon 60 Lappato  
60x60 - 24"x24"



5X13 Canyon 45 Rettificato  
45x45 - 18"x18"



5xL3 Canyon 45 Lappato  
45x45 - 18"x18"



5x13 Canyon 30x60 Rettificato  
30x60 - 12"x24"



3X13 Canyon 30 Rettificato  
30x30 - 12"x12"



V3  
Alta - High  
Haut - Kräftigere  
Alta - Высокое





7X14 Cliff 60 Rettificato  
60x60 - 24"x24"



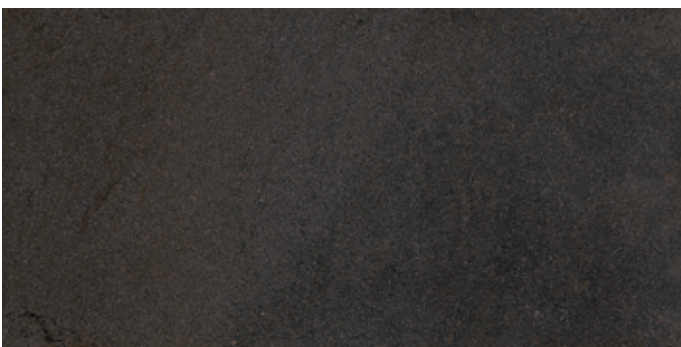
7xL4 Cliff 60 Lappato  
60x60 - 24"x24"



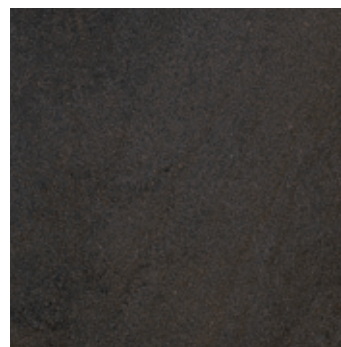
5X14 Cliff 45 Rettificato  
45x45 - 18"x18"



5xL4 Cliff 45 Lappato  
45x45 - 18"x18"



5x14 Cliff 30x60 Rettificato  
30x60 - 12"x24"



3X14 Cliff 30 Rettificato  
30x30 - 12"x12"



**V3**  
Alta - High  
Haut - Kräftigere  
Alta - Высокое





5xS1 Alaska 30x60 Strutturato  
30x60 - 12"x24"



5bx1 Alaska Brick Strutturato 30x60  
30x60 - 12"x24"



5xS2 Desert 30x60 Strutturato  
30x60 - 12"x24"



5bx2 Desert Brick Strutturato 30x60  
30x60 - 12"x24"



5xS3 Canyon 30x60 Strutturato  
30x60 - 12"x24"



5bx3 Canyon Brick Strutturato 30x60  
30x60 - 12"x24"



5xS4 Cliff 30x60 Strutturato  
30x60 - 12"x24"



5bx4 Cliff Brick Strutturato 30x60  
30x60 - 12"x24"





5bX1 Alaska Brick 30x60  
30x60 - 12"x24"



3mX1 Alaska Mosaico 30  
30x30 - 12"x12"



5bX2 Desert Brick 30x60  
30x60 - 12"x24"



3mX2 Desert Mosaico 30  
30x30 - 12"x12"



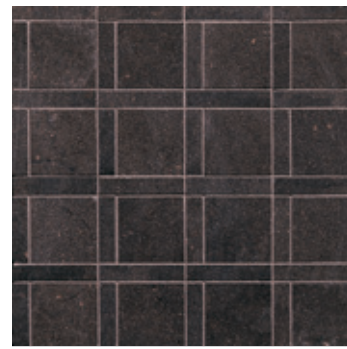
5bX3 Canyon Brick 30x60  
30x60 - 12"x24"



3mX3 Canyon Mosaico 30  
30x30 - 12"x12"



5bX4 Cliff Brick 30x60  
30x60 - 12"x24"



3mX4 Cliff Mosaico 30  
30x30 - 12"x12"

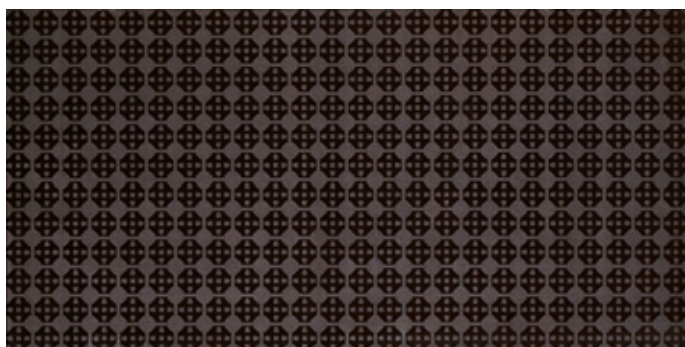




5iX1 Alaska Inserto Texture 30x60 •  
30x60 - 12"x24"



5iX2 Desert Inserto Texture 30x60 •  
30x60 - 12"x24"



5iX4 Cliff Inserto Texture 30x60 •  
30x60 - 12"x24"



3fX1 Alaska Fascia 15x30  
15x30 - 6"x12"



3aX1 Alaska Angolo F 5x5  
5x5 - 2"x2"



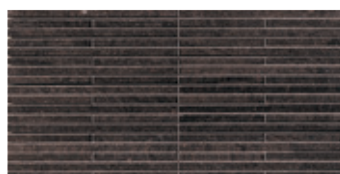
3fX2 Desert Fascia 15x30  
15x30 - 6"x12"



3fX3 Canyon Fascia 15x30  
15x30 - 6"x12"



3aX3 Canyon Angolo F 5x5  
5x5 - 2"x2"



3fX4 Cliff Fascia 15x30  
15x30 - 6"x12"



3aX4 Cliff Angolo F 5x5  
5x5 - 2"x2"

LQms Metal Satin Listello 1,5x60 ✖  
1,5x60 - 0,6"x24"

1Qms Metal Satin Angolo 1,5 ✖  
1,5x1,5 - 0,6"x0,6"

LugL Metal Lev. Listello 0,6x60 ✖  
0,6x60 - 0,2"x24"

1ugL Metal Lev. Angolo 0,6 ✖  
0,6x0,6 - 0,2"x0,2"

LugG Metal Glossy Listello 0,3x60 ✖  
0,3x60 - 0,1"x24"

Lems Metal Satin Listello 1x45 ✖  
1x45 - 0,4"x18"

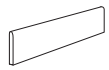
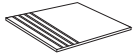





1ems Metal Satin Angolo 1 ✖  
1x1 - 0,4"x0,4"

✖ Inserto in metallo.  
Metal insert.  
Pièce spéciale en métal.  
Metall-Einleger.  
Aplicación en metal.  
Вставка из металла.

• Per uso a rivestimento.  
For wall tile use.  
Destiné au revêtement.  
Für Wandbeläge.  
Para revestimientos.  
Для использования в качестве настенного покрытия.



Pezzi speciali / Special pieces  
Pièces spéciales / Sonderteile / Piezas especiales / Специальные элементы

	 8x30 - 3,2"x12" Battiscopa	 30x30 - 12"x12" Gradino	 15x60 H. 4 - 6"x24" H. 1,6" Elemento L Strutturato *
 Alaska	6BX1	3gX1	AX11
 Desert	6BX2	3gX2	AX12
 Canyon	6BX3	3gX3	AX13
 Cliff	6BX4	3gX4	AX14

\* I pezzi sono disponibili su ordinazione / These parts are supplied to order  
Les pièces sont disponibles sur commande / Die Teile sind auf Bestellung lieferbar  
Las piezas se hacen por encargo / Изготавливаются на заказ